

## Airport executives worldwide continue to choose the proven performance of the eXaminer 3DX

Developed in partnership with the TSA, international airports and airlines, the eXaminer 3DX Explosives Detection System (EDS) is designed with airport operations in mind. In addition to receiving TSA Certification for both 100% threat mass and 75% threat mass detection standards, the 3DX has passed European Union Standard 3. The eXaminer 3DX clears bags for flight at high-throughput rates and with the lowest false alarm rates in the industry. eXaminer's adaptable design supports all airport configurations (stand-alone, partially integrated and fully-integrated in-line) with the same highly reliable CT scanner.

Featuring industry-leading 3-D Continuous Flow CT Technology, the 3DX quickly and accurately scans entire bags and automatically assesses explosive threats. For alarmed bags, it generates complete 3-D views of each threat object and

provides 3-D rotation tools to help operators make decisions regarding alarmed objects quickly and confidently.

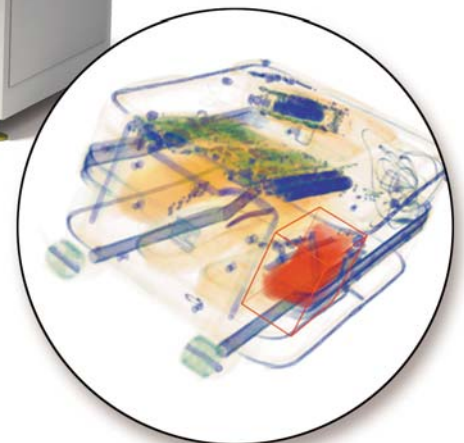
Capable of handling 550 bags per hour when integrated into an in-line system, the 3DX meets the checked baggage screening needs of airports worldwide. Its small footprint makes the most of precious space, minimizing installation and site preparation costs. Flexible networking options link hold baggage systems of any configuration (SX, 3DX, XLB, MVT-HR) with their respective viewing systems and search workstations over a secure network. Workflow management features optimize staff utilization, enabling airports to realize the lowest possible staffing and operating costs.

More than 1,000 eXaminer systems are deployed in over 26 countries worldwide. Since 2004, seven out of ten managers purchasing certified-EDS checked-baggage security systems for international airports have selected the eXaminer 3DX.



### CONFIGURATIONS

- Stand-alone
- Partially Integrated
- Fully Integrated



### COMPLIANCE

- TSA Air Cargo Qualified

## TECHNICAL SPECIFICATIONS :

### GENERAL

Standard Tunnel Opening:  
800 mm (31.5") W x up to 630 mm (24.8") H

Meter Wide Entry Tunnel Opening:  
1006.4 mm (39.6") W x 600 mm (23.6") H

In-line Meter Wide Entry Tunnel:  
1600 mm (63") L x 1159 mm (45.6") W x 1821mm (71.7") H

In-line Standard Entry/Exit Tunnel:  
1600 mm (63") L x 914 mm (35.98") W x 1821 mm (71.7") H

Scanner Dimensions:  
208 cm (82") L x 206 cm (81") W x 216 cm (85.2") H

Conveyor Belt Height: 927 mm (36.5")

Conveyor Speed: 15 cm/sec (6 in/sec)

Conveyor Capacity: 136 kg (300 lbs)

Bag Size: 780 mm (30.71") W x 2540 mm (100") L\*  
\* Max Bag Length dependent on system configuration

Operational Throughput:  
330 bags/hour (stand-alone)  
550 bags/hour (in-line)

Power Requirements:  
208 VAC ±10%, 50-60Hz, 3Ø, 39.5 FLA or 480 VAC ±10%, 50-60Hz, 3Ø, 17.2 FLA (other acceptable sources: 380/400/415/440 VAC ±10%, 50-60Hz, 3Ø)

### PHYSICAL SPECIFICATIONS - Weights

Scanner: Approx. 3,050 kg (6,700 lbs)

Meter Wide Entry Tunnel: Approx. 726 kg (1,597 lbs)

Inline Entry/Exit Tunnel: Approx. 408 kg (898 lbs)

### X-RAY

X-ray Voltage: 165 kV, 10 mA

Duty Cycle: 100%

Cooling: Oil-filled

X-ray Sensor: Solid-state detectors, 3-D Continuous Flow helical computed tomography



## Security & Detection Systems

Website: [www.L-3com.com/sds](http://www.L-3com.com/sds)  
Email: [inforequest.sds@L-3com.com](mailto:inforequest.sds@L-3com.com)

USA: Tel: +1 781 939 3800, Toll Free: 1 800 776 3031 (US only)  
United Kingdom: Tel: +44 (0) 1344 477900  
Asia: Tel: +86 10 5976 1616  
Australia: Tel: +61 3 8645 4500  
Middle East: Tel: +971 4 609 1906

L-3 has made all reasonable efforts to ensure that the information in this document is accurate and complete, and disclaims any and all warranties for such accuracy and completeness, and is proprietary. This brochure consists of L-3 Communications Corporation general capabilities information that does not contain controlled technical data as defined within the Export Administration Regulations (EAR) Part 734.7-11.

### IMAGING AND PERFORMANCE

Video Resolution:  
1920 x 1280 high resolution, flat panel LCD monitor

Image Display:  
2-D and 3-D images  
3-D full bag scan in a single pass  
Full 3-D bag/threat object views  
3-D full image and threat object rotation

### EDS FEATURES

Networking:  
L-3 OptiNet™ with AT and/or CT  
Field Data Reporting System (FDRS)

Image Archive:  
Images stored for 48 hours

Diagnostics:  
Built-in test capabilities  
Enhanced data and service logs  
Integrated service software test suite

Search Work Stations (SWS) to support trace/physical inspection with 3-D tools

### ENVIRONMENTAL

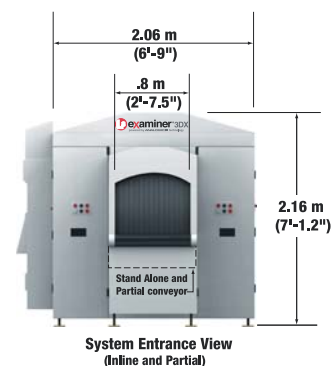
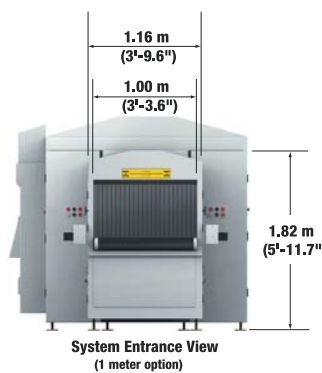
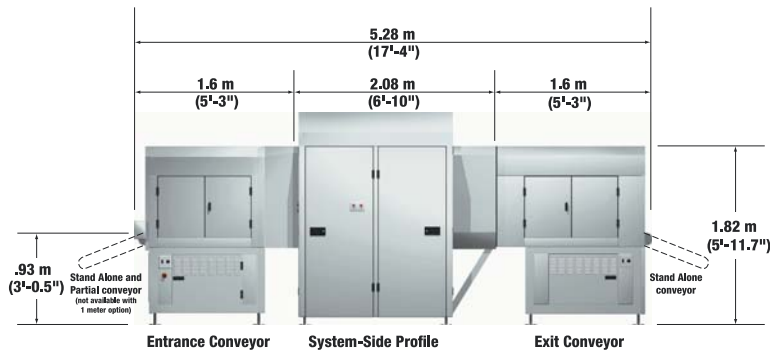
Operating Temperature: 0°C to +40°C  
Storage Temperature: -20°C to +60°C  
Relative Humidity: 10 to 85%, non-condensing

### RADIATION SAFETY

All L-3 Communication Security & Detection Systems' X-ray systems comply with all international standards for radiation safety requirements and external emissions limits including the United States Code of Federal Regulations, Title 21, Section 1020.40 (21 CFR1 020.40) that apply to our products.

### OPERATIONAL STANDARDS

Complies with published international standards including the U.S. Federal Aviation Administration Standards, "Use of X-ray Systems" (Federal Standards 14 CFR108.17 and 14 CFR 129.26).



\*System dimensions are rounded to the nearest decimal.